

# 'TINY TREASURES'

## Square - Part 8



**Colour, Black & Gold**  
**12 monthly parts!**



## 'Tiny Treasures' Square Design Part 8

Design area: 15.29 x 15.29 inches

Stitches: 214 x 214

### Material:

Zweigart 28 count evenweave or 14 count Aida, 22 x 22 inches

If 25 count Lugana is used: 24 x 24 inches

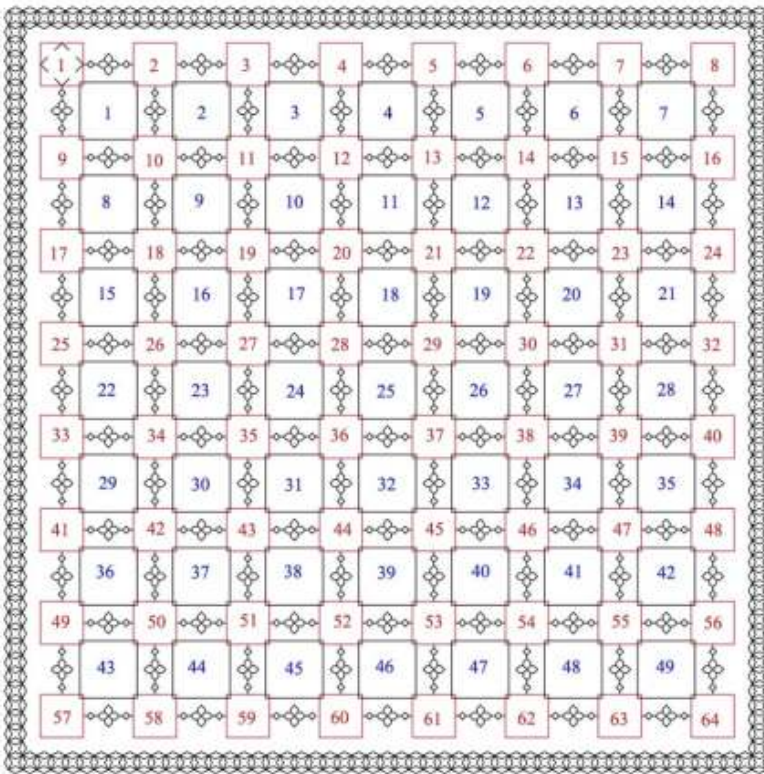
### Stitches used:

Back stitch, one strand of floss

Cross stitch two strands of floss

Evenweave: stitches are worked over 2 threads unless the pattern indicates otherwise.

Cross stitch: stitches are worked over two threads or one block unless the pattern indicates otherwise.



### Square Pattern Layout

Design area: 15.29 x 15.29 inches

Material: Zweigart 28 count evenweave or 14 count Aida, 22 x 22 inches

64 Flower motifs

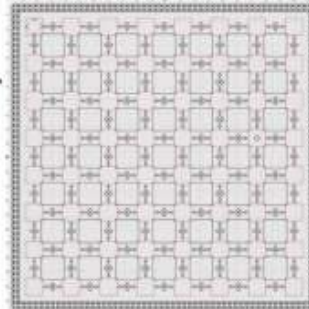
49 Pattern Blocks

112 Mini links

Border = 226 Tiny Treasures

Each flower can be a different colour

Each pattern block can be a different colour



### 1. Work Part 8 as follows:

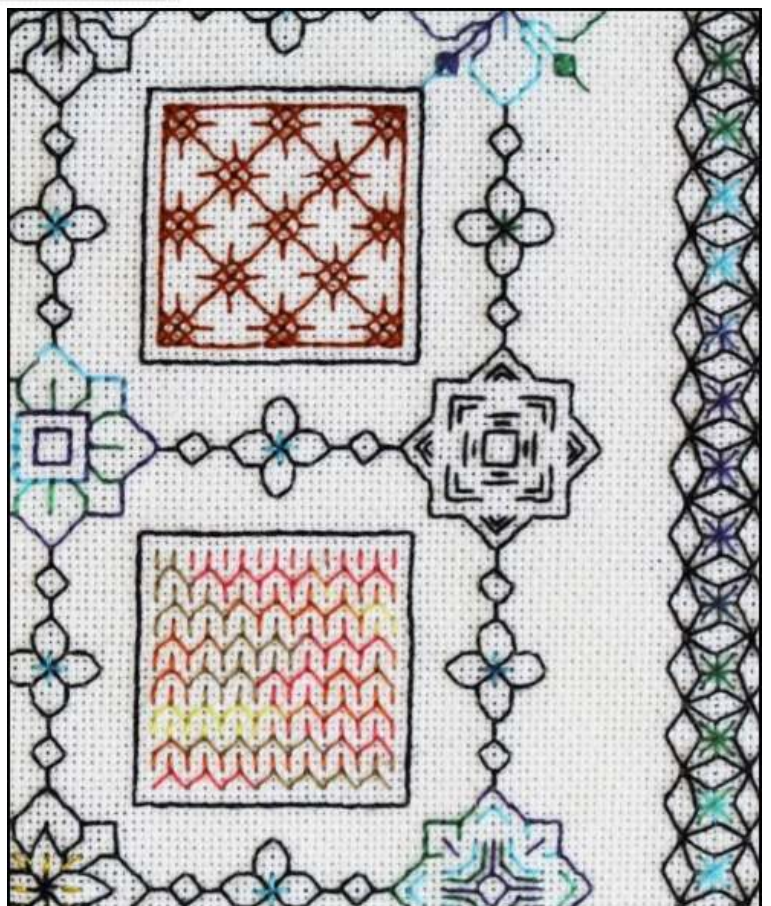
Finish off any patterns from previous parts.

Add beads after the whole embroidery has been completed.

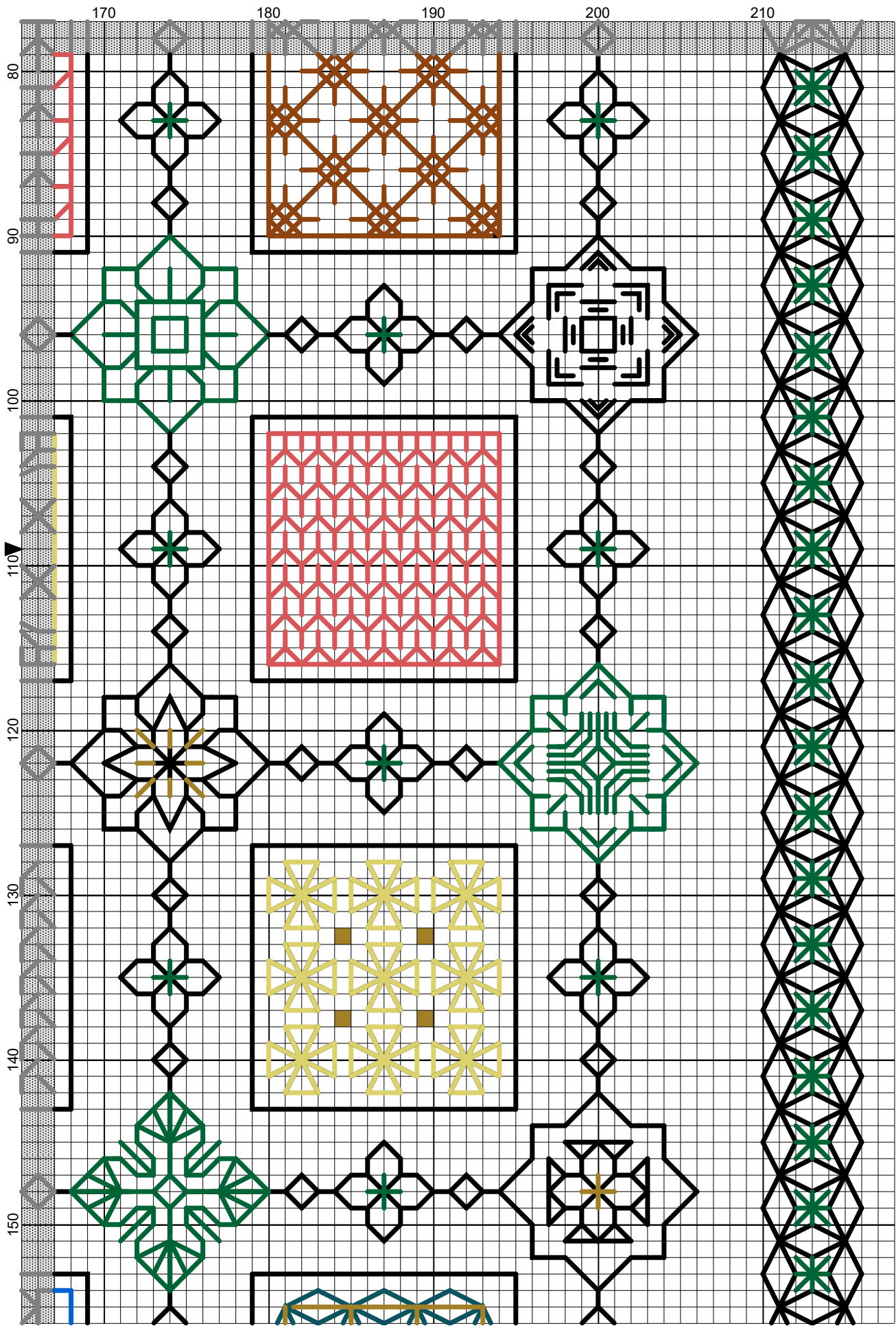
I hope you enjoy reading the information and working the design.

If you have any queries please contact:  
[lizalmond@blackworkjourney.co.uk](mailto:lizalmond@blackworkjourney.co.uk)

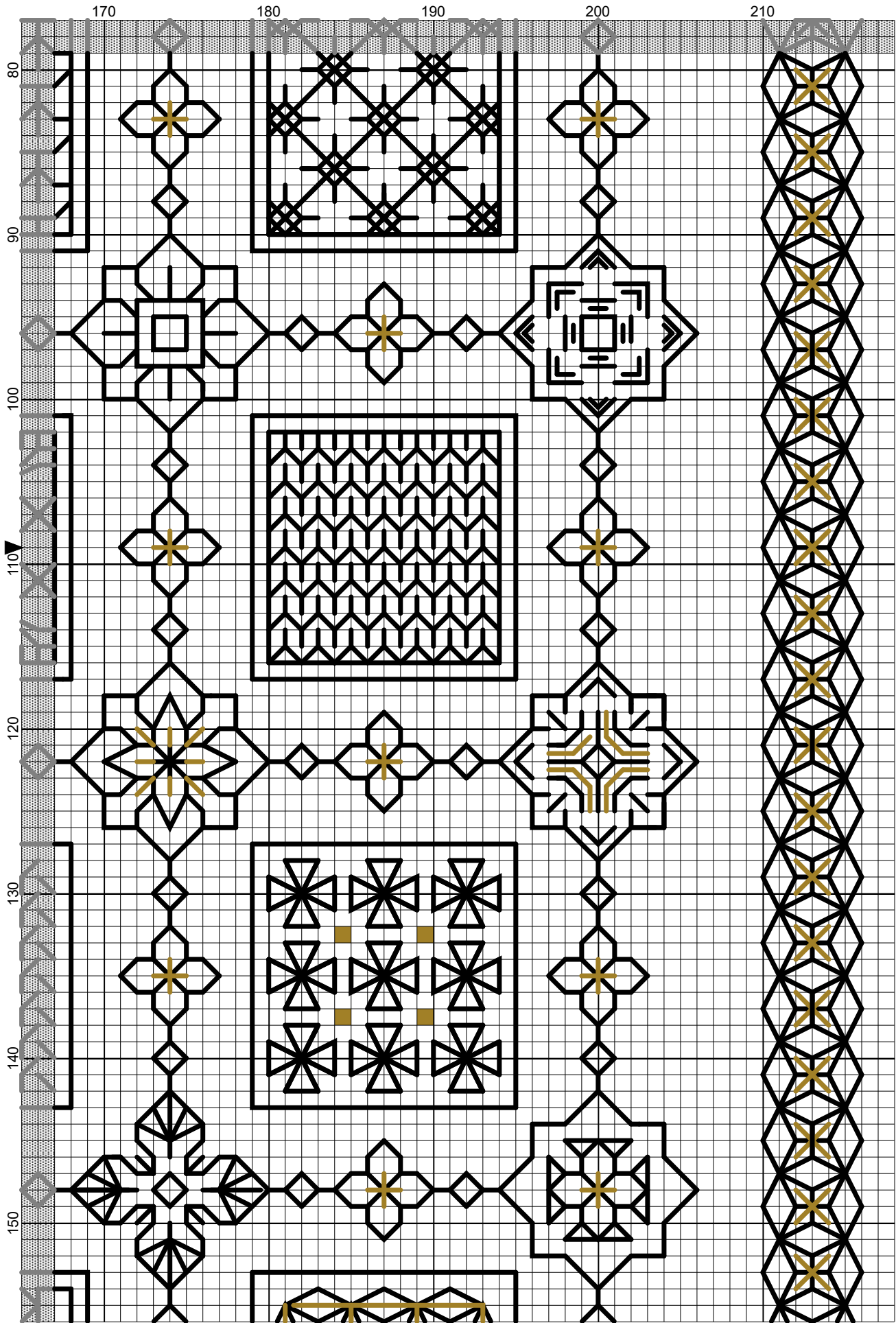
*Part 8 Extract from Square design Embroidery*



Tiny Treasures Square



Elizabeth Almond



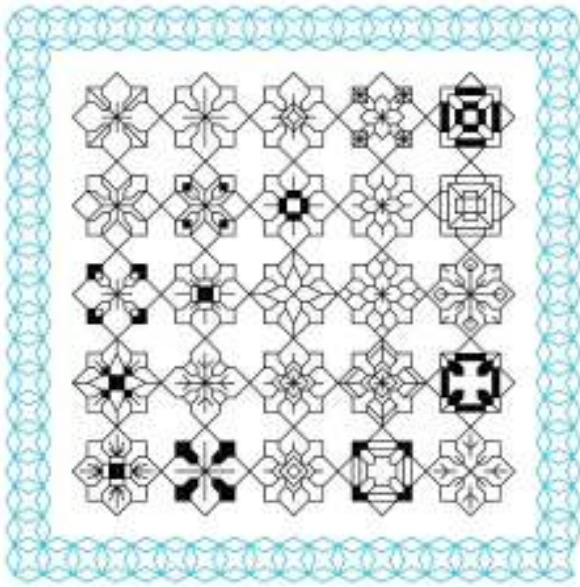
Elizabeth Almond



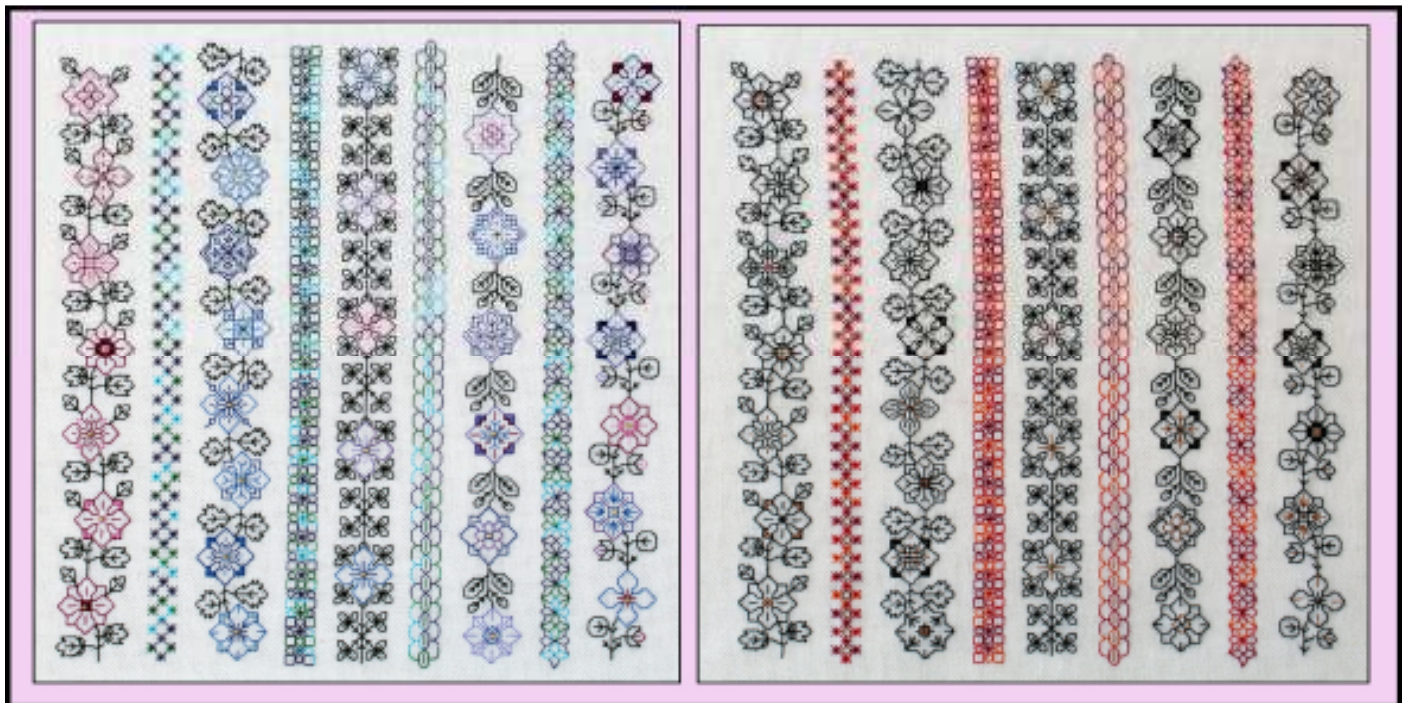
## 'Tiny Treasures' Variation

Create a simple sampler using the flower motifs from 'Tiny Treasures'. Each flower can be a different colour as shown in Margaret's interpretation or use just two of your favourite colours!

**Design Area:** 5.57 x 5.57 inches, 78 x 78 stitches

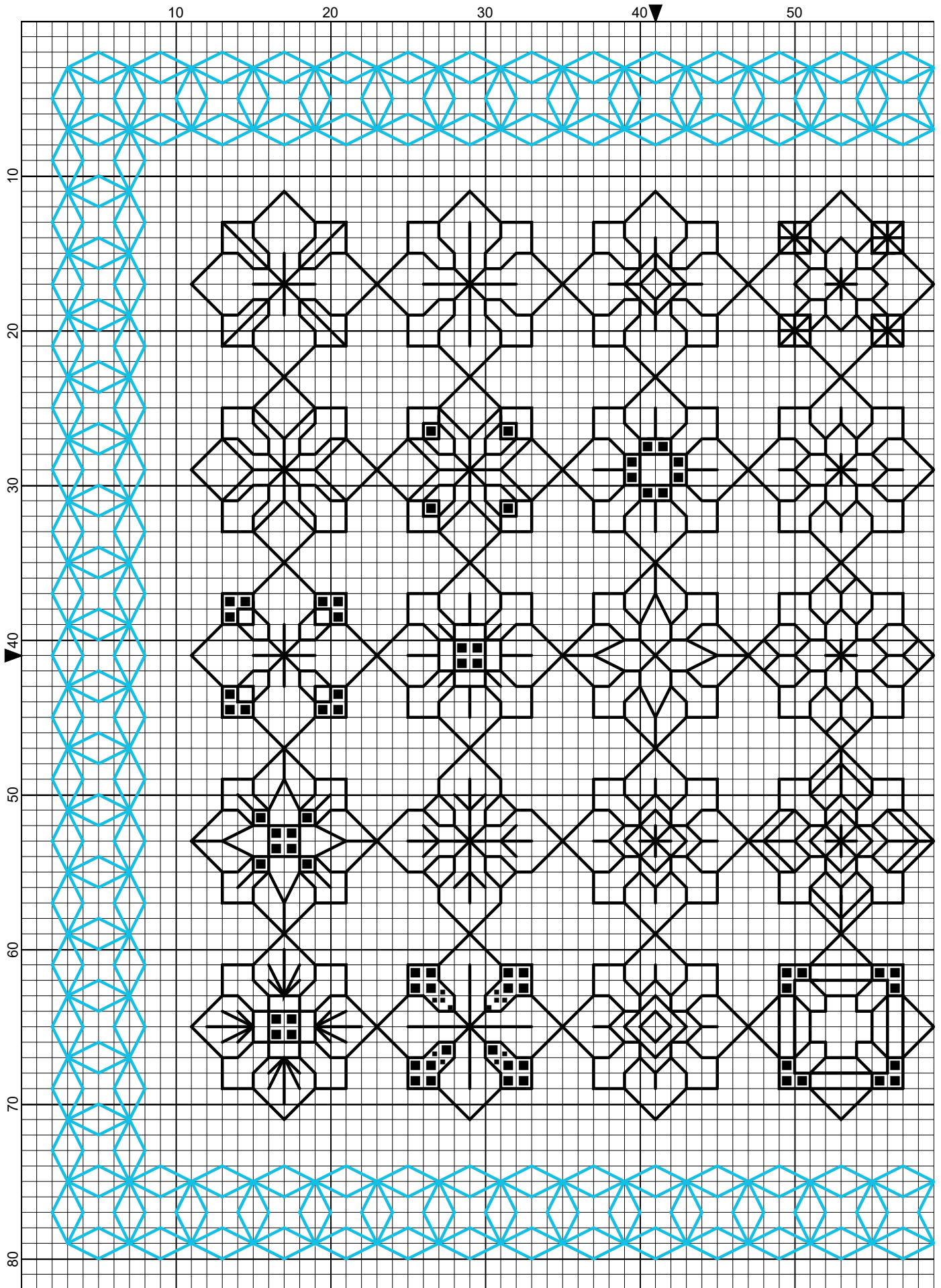


*Margaret's variation worked on 14 count Aida*



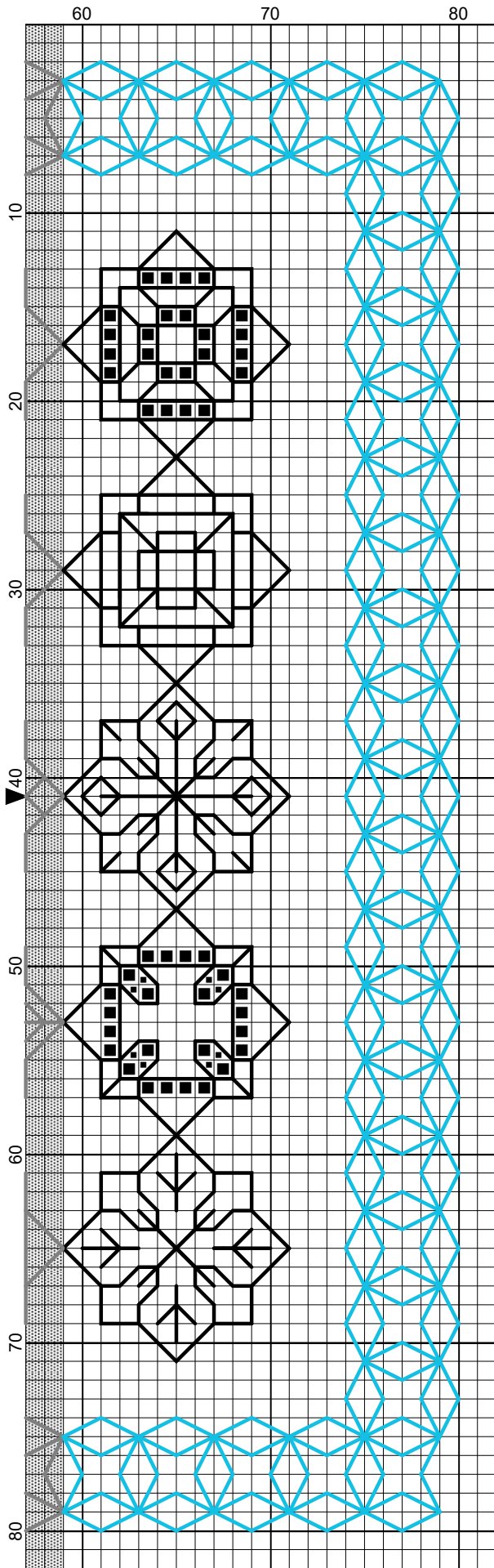
Two other samplers have been developed from 'Tiny Treasures'. They are CH0385 Colour Clematic and CH0386 Copper Clematis. These can be found in 'Charts' in Blackwork Journey.

Tiny Treasures Variation



Elizabeth Almond

Tiny Treasures Variation



Elizabeth Almond